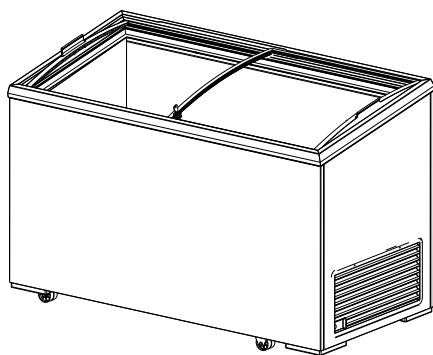


EN

HORIZONTAL COOLERS OPERATING MANUAL



S 152 BC
S 152 BCSG AC
S 152 BCSG AF
S 200 BCSG RF AC
S 300 BC
S 300 BC RF
S 300 BCSG AF
S 300 BCSG RF AC
S 500 BC

1. CONTENTS

- Part 1. Contents
- Part 2. Introduction
- Part 3. Precautions and Safety Instructions Before The Initial Start-Up
- Part 4. Technical Features of Horizontal Coolers
- Part 5. Assembly of Horizontal Coolers/ The Initial Start-up
- Part 6. Operating Horizontal Coolers
- Part 7. Cleaning, Maintaining and Transporting Horizontal Coolers
- Part 8. Trouble Shooting
- Part 9. Compliance Norms

2. INTRODUCTION

This operating manual has been designed to facilitate the use of your horizontal cooler with maximum efficiency over the years. In all of the manufacturing processes “**environmentally friendly**” technologies are used as well as materials and refrigerants that are not harmful to the nature.

Please read this manual carefully before you start operating your cooler in order to prevent user defects and ensure maximum efficiency from this product that has been manufactured to serve you over the years.

Detect the cooler immediately on delivery for any damage. In case of any damage, contact with your authorized dealer within 24 hours.

Attention: It requires a lapse of minimum 2 hours after any transportation before you start operating your cooler. If the cooler has remained in an environment, the temperature of which was below 0 °C for a long period, allow for the compressor temperature to reach beyond +5°C before re-operating the cooler.

3. PRECAUTIONS AND SAFETY INSTRUCTIONS BEFORE THE INITIAL START-UP

Your cooler must be plugged certainly in an earthed wall socket.

Before operating the cooler, ensure that the mains socket is checked for proper earthing (grounding) and nominal voltage and frequency requirements by the authorized service staff or a qualified electrician. Call the authorized service centres for replacement, in case the supply cord /plug is damaged.

The nominal voltage and frequency requirements for the body are specified on the data plate.

Do not use multi socket and extension cable.

The main power supply to which the visi-cooler is connected must have a leakage current relay.

Never make any repairs or carry out maintenance while the cooler is plugged in the mains socket.

Unless otherwise stated, do not place your cooler to open areas where water can leak in.

Do not wash with pressurized water or hose when cleaning the product and its surroundings, use a wet cloth. Otherwise, the water which may intrude into the electrical components of the product can cause electric shock and fire risk.

Start the visi-cooler on a level surface. Position it on the floor and make sure that it is level using a bubble gauge.

Do not position the cooler in a place, close to a source of strong heat or exposed to direct sunlight. Always remember that the UV lights in the sunlight deteriorates food in the glass door coolers.

All the components that produce heat are located at the bottom part of your cooler. Proper air circulation at this part is very important to ensure performance, therefore while positioning the cooler, allow minimum 10 cm of space from the sides.

Compressor partition covered with plastic louver, which contains mechanical and electric components, are located in the right of your cooler. In order to keep the air circulation of this partition at sufficient level, place your cooler 40 cm away from structures such as louver, wall, screen or another freezer, which can prevent air flow. Prevention of air flow can negatively impact values such as cooling performance, electric consumption, sound level etc.

Minimum 15 mm space must be left between products placed in the cooler or product packaging. Excessive or compressive placement will negatively affect the performance of your cooler.

Do not let children get into and play around the body. Keep the cooler key and plastic bags covering the accessories and the Manuel in a safe place out of reach of children.

Do not place any explosives and flammables in the cooler for safety reasons. Clean the cooler before operating.

Leave the top of the visicooler free, so that hot air from bottom can circulate effectively.

This appliance can be used by children aged from 8 years and above and persons with reduced physical, sensory or mental capabilities or lack of experience and knowledge if they have been given supervision or instruction concerning use of the appliance in a safe way and understand the hazards involved. Children shall not play with the appliance. Cleaning and user maintenance shall not be made by children without supervision.

PLEASE CHECK YOUR REFRIGERANT GAS TYPE FROM THE RATING LABEL: R134a, R600a, R290 or R744 (CO₂)

Only for the models with R600a or R290 gas:

R600a/R290 gas is used in some models, explained in this instruction manual. R600a/R290 is an environmentally friendly gas and used in appliances which have effective cooling technology. This gas is flammable only under certain conditions. You must follow up the following rules if you wish to get normal operating conditions.

WARNING : Keep ventilation openings, in the appliance enclosure or in the built-in structure, clear of obstruction.

WARNING : Do not use mechanical devices or other means to accelerate the defrosting process.

WARNING : Do not damage the refrigerant circuit.

WARNING : Do not use electrical appliances inside the food storage compartments of the appliance.

WARNING : In order to reduce flammability hazards, the installation of this appliance must only be carried out by a suitably qualified person.

Do not tangle with the device due to maintenance, repair or any other reasons other than authorized service.

Plug off the device against any possible freezing or icing and leave for defrosting.

Choose original components for all parts necessary for replacement on the product.

Only for models with R744 (CO₂) gas :

WARNING : The refrigeration system is under high pressure. Do not tamper with it.

Contact qualified service personal before servicing. Please ensure to comply with local regulations.



Pressure

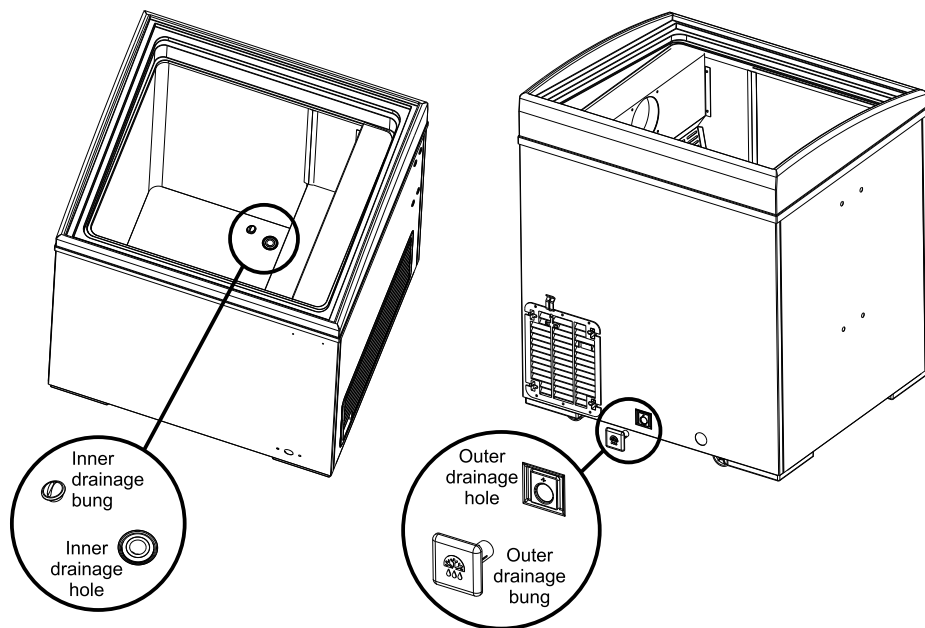
The symbol on the left means that the cooling system is under the high pressure and your appliance was marked with a warning label which contains this symbol.

This Cooler uses CO₂ Refrigerant that operates at High Pressures. A High Pressures Safety switch is used to protect the system from exceeding the desired safety limit. When the pressure switch activates it cut off the power supply to the Controller, which in turn shuts the complete cooler down. After the system pressures come back to the normal range, the Pressure Safety Switch is deactivated & the cooler starts to operate normal again.

If the supply cord is connected to the plug and the cooler does not operate (lamps are off, all electrical components are off), please unplug the cooler and call a qualified service technician who has experience with CO₂ refrigerators & is authorized to work with CO₂ refrigerators. Please do not try to repair the cooler by yourself.

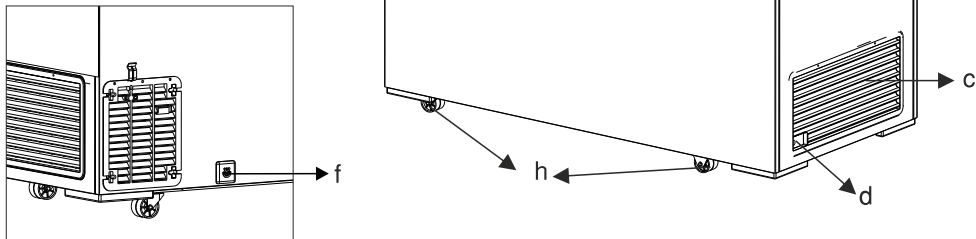
Only for S 200 BCSG RF AC model:

Your cooler is IP24 protected and suitable for outdoor usage. However, after long term outdoor usage under precipitation, water can build up inside your cooler. In the event of need, this water must be emptied via opening the drainage holes, whose pictures are given below.



4. TECHNICAL FEATURES OF HORIZONTAL COOLERS

- a- Glass lid
- b- Lid lock
- c- Power compartment
- d- Control Light
- e- Storing basket (Optional)
- f- Water Drainage (Optional)
- g- Handle
- h- Feet and Castors (Optional)



TECHNICAL FEATURES		S 152 BC	S 152 BCSG AC S 152 BCSG AF	S 200 BCSG RF AC
Operating Temperature	°C	0 / + 13	0 / + 13	0 / + 13
Climate Class		Please see the name plate...		
Power	W			
Voltage/Frequency	V/hz			
Exterior Dimensions	LxWxH (mm)	585x680x840	585x635x820	725x635x875
Interior Dimensions	LxWxH (mm)	460x510x675	460x510x560	520x510x620

TECHNICAL FEATURES		S 300 BC S 300 BC RF	S 300 BCSG AF S 300 BCSG RF AC	S 500 BC
Operating Temperature	°C	0 / + 13	0 / + 13	0 / + 13
Climate Class		Please see the name plate...		
Power	W			
Voltage/Frequency	V/hz			
Exterior Dimensions	LxWxH (mm)	1015x680x895	1015x635x875	1555x720x895
Interior Dimensions	LxWxH (mm)	890x510x675	890x510x665	1430x510x675

Values specified above tables are given according to standard values and can vary by optional features.

Type label is located in the refrigerant part of the cabinet.

Please see the back page of the guide for the Type label sample.

Climate Classes			
Class	Temperature °C	Relative Humidity %	Dew Point °C
0	20	50	9,3
1	16	80	12,6
2	22	65	15,2
3	25	60	16,7
4	30	55	20,0
5	27	70	21,1
6	40	40	23,9
7	35	75	30,0
8	23,9	55	14,3

5. ASSEMBLING HORIZONTAL COOLERS / INITIAL START UP

Air circulation at the rear is required for the coolers operate efficiently.

Move the cooler backwards to place it properly.

Allow minimum 10cm of space from the sides and the rear in order to ensure proper air circulation.

Your cooler is now ready to plug in.

6. OPERATING THE HORIZONTAL COOLERS

Control Panel:

Green Light:

It is lit so long as the cooler is connected to the electric supply and the cooler functions.

Power on
light-green



Thermostat Setting

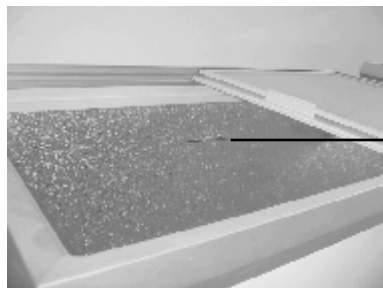
It is not possible to see the thermostat setting knob from the outside, which is located inside the power compartment.

Thermostat setting is done at the factory. Do not interfere with the thermostat setting. Call the authorized service when you want to change its setting.

Storing Foods:

In order to gain maximum benefit from the cooler and ensure proper food storage, leave enough space between the top lid and the food packages. Therefore never exceed the maximum loading line marked in the body.

For the S 200 BCSG RF AC models, the maximum loading line is the basket itself.



Maximum
Load Line

Attention : Not suitable for use in preservation of food items like meat or chicken.

7. CLEANING, MAINTAINING AND TRANSPORTING HORIZONTAL COOLERS

To ensure higher efficiency, your cooler must be regularly cleaned. Never use any cleaning agent that contains alcohol, scouring powder or powerful solvents. Always remove the plug from the mains socket before cleaning the cooler. Add two teaspoons of baking soda (bicarbonate of soda) in 1-liter water and use this mixture to clean the cooler. Clean the outer part with a wet cloth and then wipe it out.

If there is a drip tray for the water to accumulate after defrosting, clean it once a year with a damp cloth.

The cooling system design of the S200 BCSG RF AC model might cause a scarce amount of condensation flows inside the cooler. The water collected due to this reason, should be pumped out periodically; once in 2-3 weeks depending on conditions of usage.

Your cooler has been designed not to make any frost. However if it is operated in a very damp environment or if its door/lid is frequently opened, some frost may occur. For manual defrosting:

Adjust the thermostat to zero and unplug the cooler. Remove the foodstuff from the cooler and keep them somewhere cold or wrap them with an insulating material. Open the door/lid of your cooler and allow for defrosting. Never use any scraper or sharp tools to remove frost or ice.

Attention: Never use any hot water, electrical heater, sharp tools or similar things as they may harm the cooler.

Holidays / Stop Using For A While:

Do not unplug your cooler if you are going on a holiday or stop using it for a short time.

If you are going on a holiday or stop using the cooler for a long time, unplug the cooler and empty it. After defrosting, clean the cooler and wipe it out with a cloth. Leave the door open to prevent odour in the cooler.

Transporting your cooler:

Before relocating the body, unplug it from the mains socket, defrost it, wipe the interior walls and floor with a damp cloth, place the plastic blockings between the lids and the body and carry it in the normal position as it is used.

Attention: Expansion gas (C-Pentane) is used in the insulation system of the cooler. When you dispose the body, it requires observing the applicable laws and rules of the country in which it is used.

Cleaning / maintaining of your cooler's condenser must be done at least two times in a year by authorized service.

Locking Mechanism of the Glass Lids

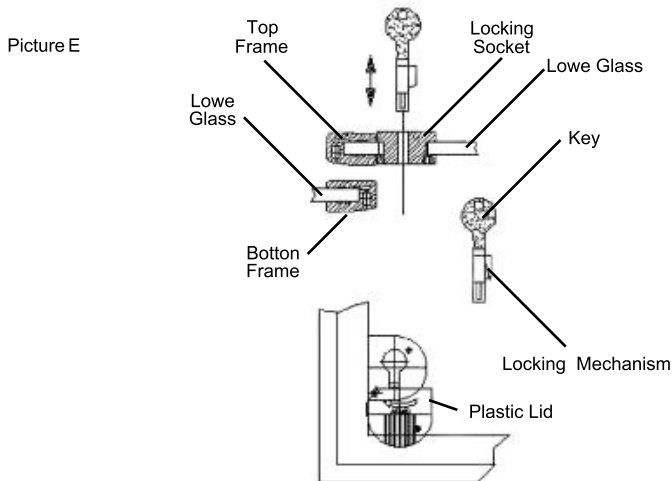
Locking

- There are two separate bolts in the locking mechanism. When the key is not inserted in the lock, there is an angle of 90° between the two bolts. After having inserted the key duly in the locking mechanism, it becomes possible to align the bolts, which are originally perpendicular to each other.
- Open the socket of the lock by softly rotating its plastic lid clockwise.
- Make sure that the body lids are completely closed for proper locking. Insert the locking mechanism and key in the socket as shown in the picture (Picture E). Turn the key clockwise to lock the lids. Once the body is locked, the key is released and you can pull it out.

Unlocking

- Gently insert the key in the locking mechanism and turn it anticlockwise until the end by exerting a mild force. In case the key is caught or gets stuck in the socket for having been turned too much or for any other reason, gently move it right and leftwards.
- Pull out the key and the locking mechanism together. Lids will get opened.

We recommend that you always keep the key and the locking mechanism together. In order to eliminate air and any undesired substance passage into the body while unlocked, cover the locking socket by turning its plastic lid.



8. TROUBLE SHOOTING

- **If the cooler does not function;**

- Check if the cooler is properly plugged in the mains socket
- Check if there is electric current to the mains socket
- Check if the fuse has blown out.
- Check if there is power failure.

- **If the cooler operates more frequently than desired;**

- Check if the lids are opened very frequently or left open for a long time
- Check if the thermostat is set to chill more than desired
- Check if the compressor compartment is properly ventilated or compressor compartment needs cleaning.

- **If the cooler does not cool enough;**

- Check the temperature setting
- Check if the lids are opened very frequently or left open for a long time
- Check if the internal air circulation is interrupted by overloading
- Cleaning / maintaining of condenser might not done. (Please See Section7)

- **If there is odour in the cooler;**

- Check if odorous foodstuff is stored in uncovered containers
- Check if inside is properly cleaned.

After checking the above-mentioned points and carrying out the recommendations, if your cooler still functions unsatisfactorily, contact the nearest authorized service centre, informing your complaints as well as the model and serial number of your cooler.

9. COMPLIANCE NORMS

Coolers described in this manual are manufactured and inspected in compliance with the

TS EN ISO 23953-1

TS EN ISO 23953-2

TS EN 60335-2-89

IEC 60335-2-89

2006/95/EC,

2004/108/EC

Type :

C-PENTANE

Model :

Input :

Class :

Power / Current :

Refrig. :

Operation manual is inside the unit.



